

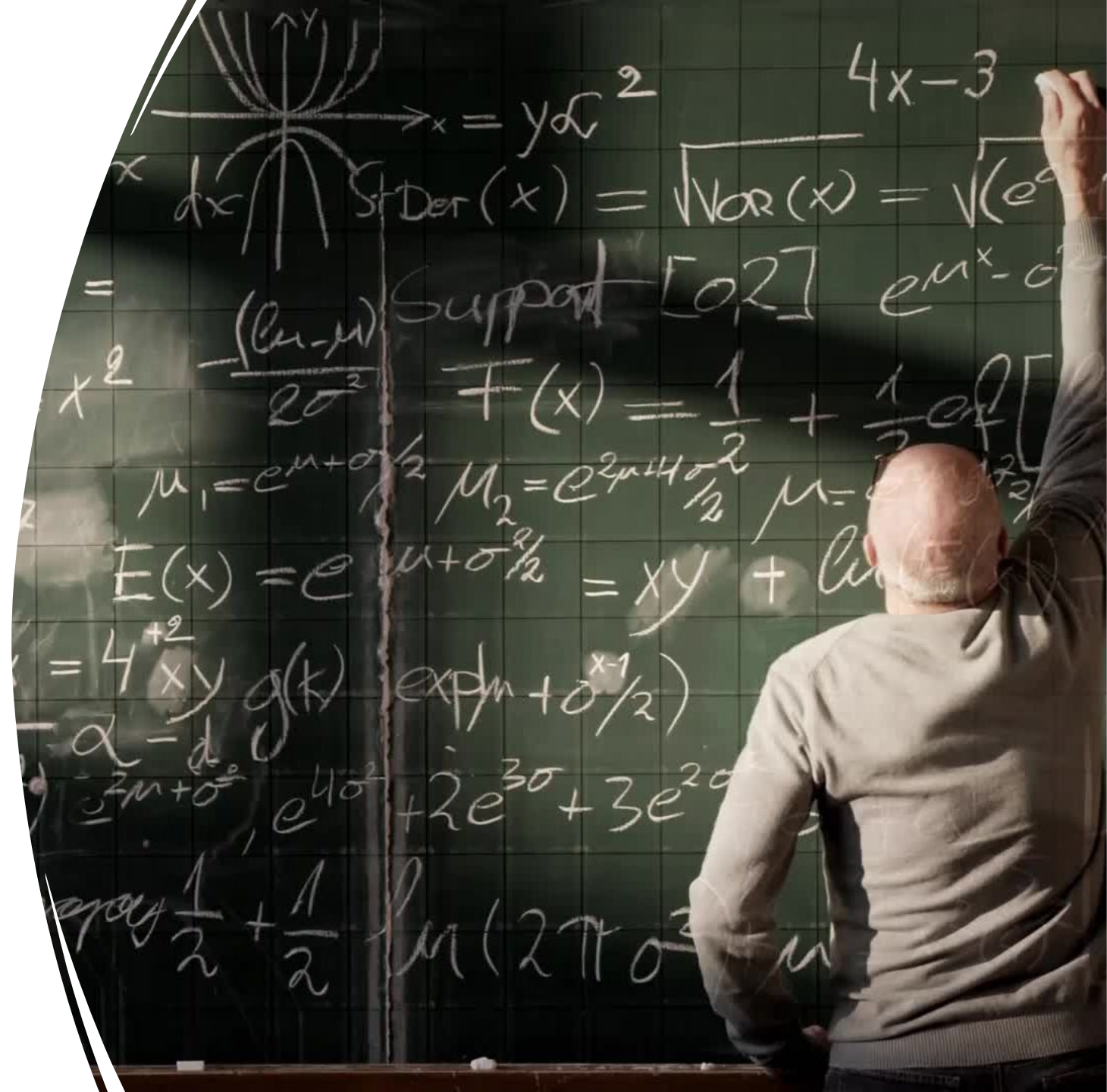
Power BI Intro

East Carolina University
Office for Faculty Excellence
Research and Statistics
Workshops, Summer 2024



About the Presenter

- **Greg Harris**, Associate Director of Institutional Research, IPAR
 - Lean Six Sigma Green Belt, 2015
 - MBA, 2013
 - BA, Anthropology & Religious Studies, 2007
- ECU Pirate Since 2002
- Interests: Cooking, Jogging, Horror Films, and All Things Data!



Agenda



Concepts (~50 mins)

Importance of Data

Visualization (~30 mins)

- In Business Intelligence
- In Academic Research

Power BI (~15 mins)

- Intro & Key Features
- Power BI Desktop



Break (~10 mins)



Demonstration (~50 mins)

Get Data

Transform & Model Data

Create Visualizations

Publish

Data Visualization in Business Intelligence

- **Why is data visualization important in business intelligence?**
 - Data visualization plays a crucial role in **unlocking the value of data**, driving informed decision-making, and fostering a data-driven culture within organizations.
 - By harnessing the power of visualizations, organizations **can gain deeper insights, communicate more effectively, and achieve better outcomes** across various domains.



Data Vis for BI: Exploration and Discovery

- Visualizations encourage exploration and discovery by allowing users to interact with the data dynamically.
- Features such as interactive filters, drill-downs, and tooltips enable users to delve deeper into the data, ask questions, and uncover new insights, fostering a culture of data-driven exploration and learning.

Reports > Segment Overview

Segment Overview

555.98K

Consumer Sales

1.03M

Corporate Sales

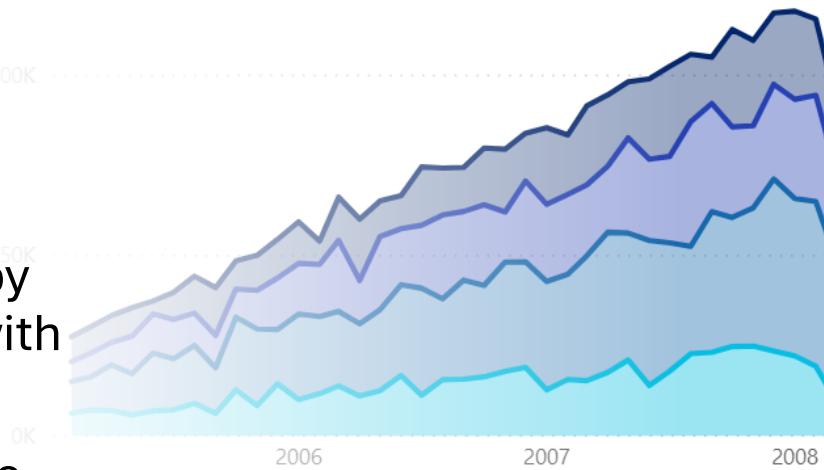
696.07K

Home Office Sales

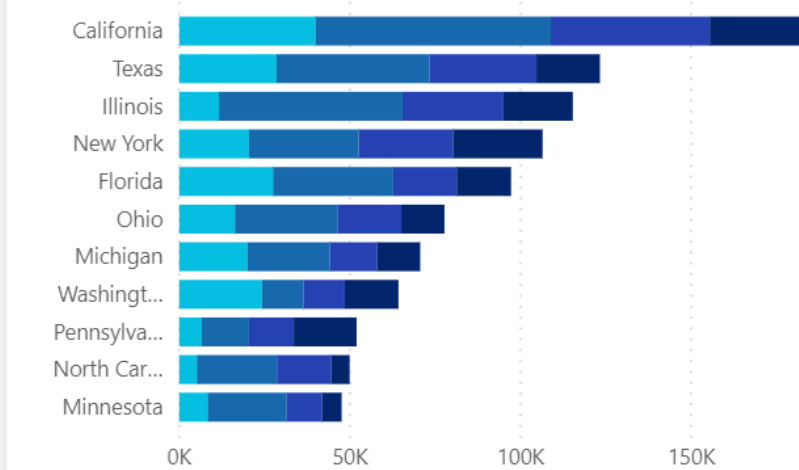
560.68K

Small Business Sales

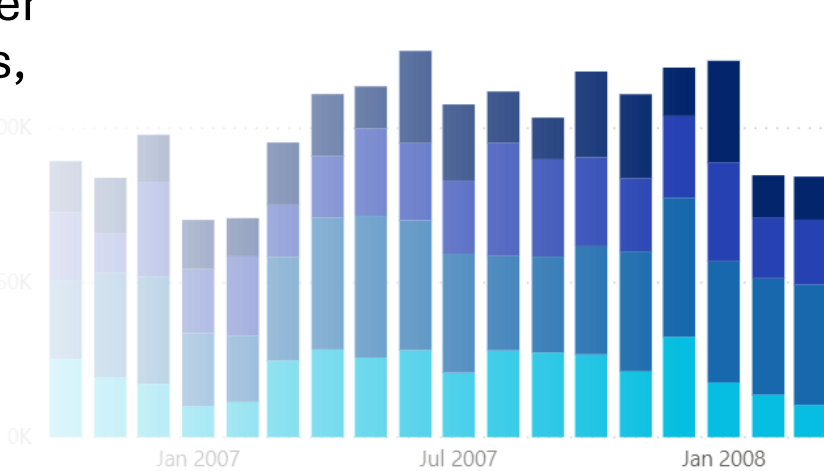
Sales by Order Month and Segment



Sales by State and Segment



Operating Cost by Order Month and Segment



Largest Sales

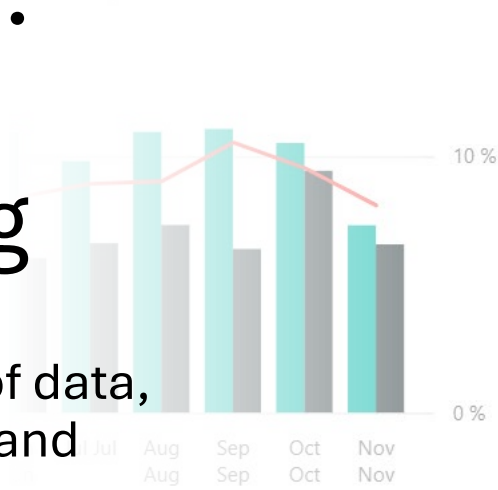
Order ID	Order Date	Customer Name	Operating Cost	Sales
90831	12/28/2007	Sheryl Alexander	2,789.06	2,43
2209	9/25/2007	Ronnie Dodson	130.81	2,23
90916	2/26/2008	Dennis Boykin Townsend	1,970.46	1,82
91047	11/19/2006	Nina Bowles	-1,259.35	1,82
90778	5/31/2007	Carlos Johnson	7,865.40	1,78
90864	6/16/2007	John Merritt	-1,141.23	1,77
45571	12/18/2007	Ruth McConnell Young	351.49	1,72
91121	3/12/2008	Neil Hahn	-1,604.93	1,72
86355	2/15/2008	Keith Fowler	405.54	1,69
88013	1/28/2008	Don Beard	163.87	1,64

Data Vis for BI: Clarity and Understanding

- Visual representations of data, such as charts, graphs, and maps, make complex information easier to understand immediately.
- By presenting data visually, patterns, trends, and relationships become more apparent, helping users grasp the insights hidden within the data more quickly and intuitively.

Period Last Year, Actives YoY % C...

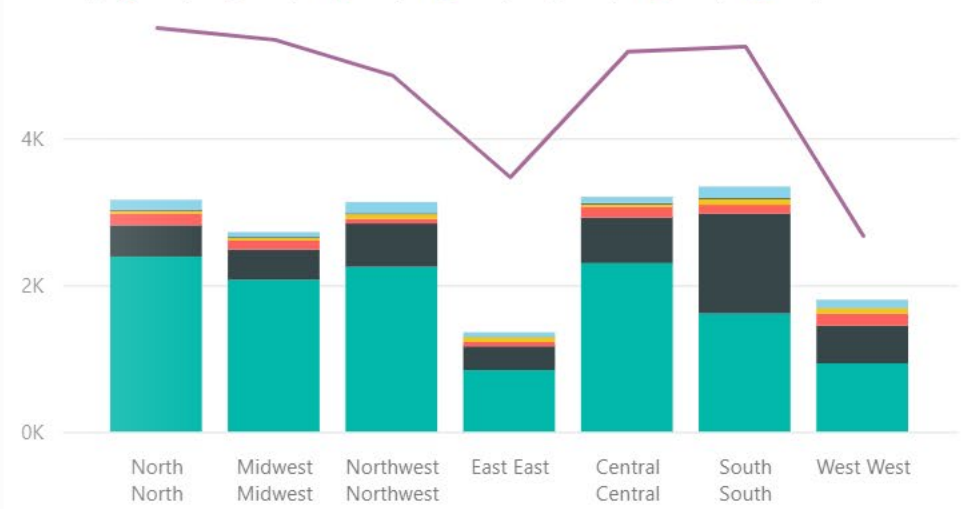
% Change



New Hire Count, Active Employee Count

BY REGION, ETHNICITY

Ethnicity Group A Group B Group C Group D Group E Group F Group G



New Hires

LAST 6 MONTHS OF 2...

10

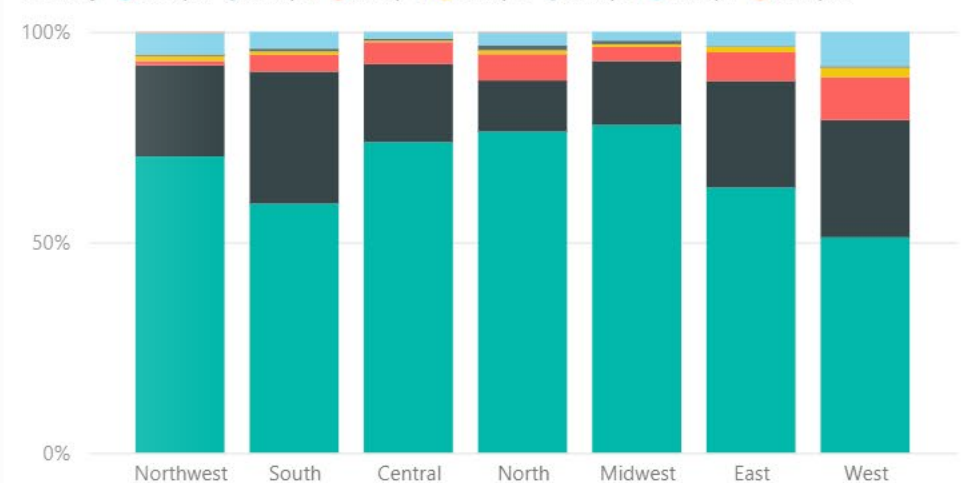
New Hire Count BY GENDER



Bad Hires (<60 Days of Employment)

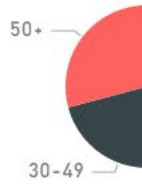
BY REGION, ETHNICITY

Ethnicity Group A Group B Group C Group D Group E Group F Group G



Active Employee

BY AGE GROUP

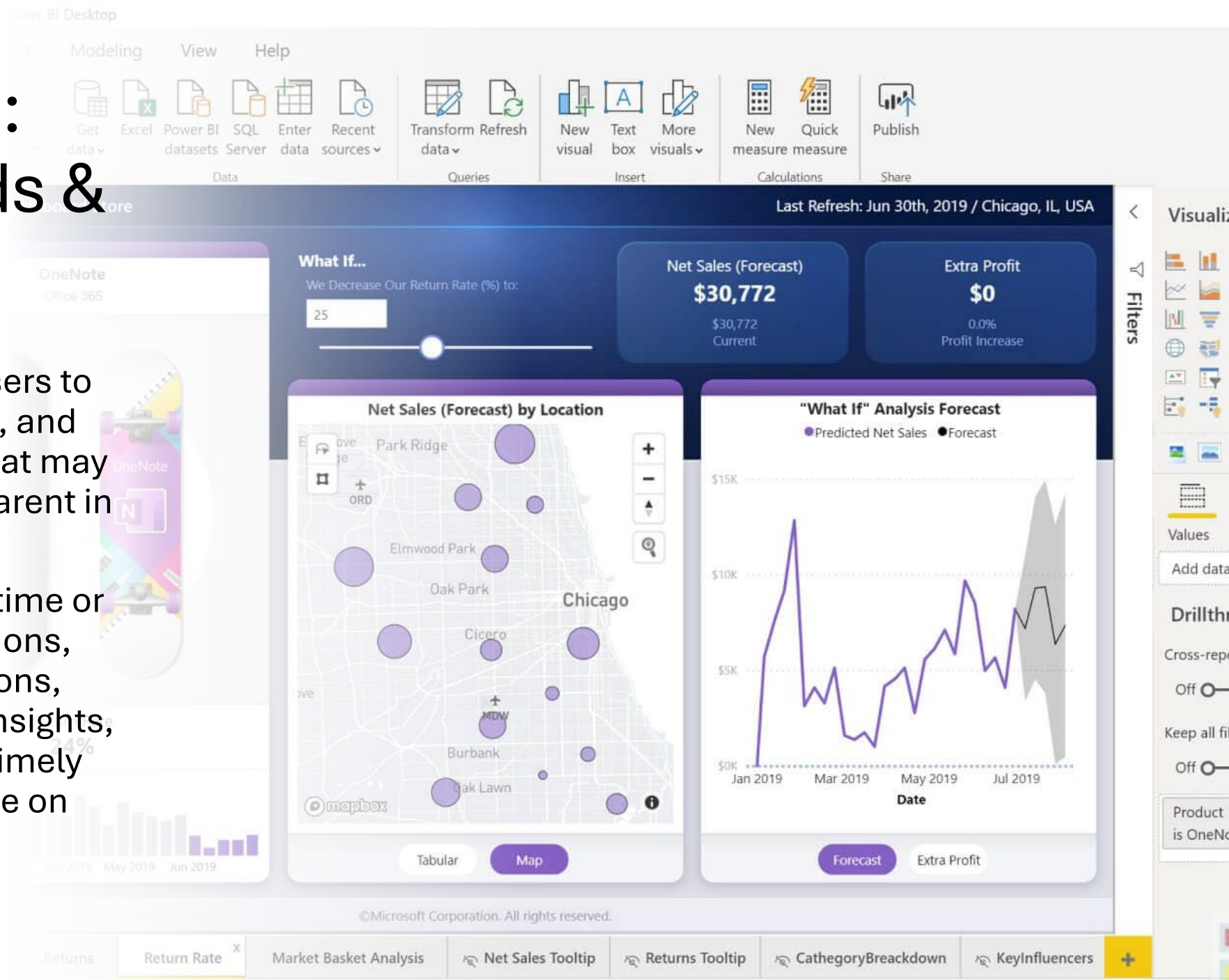


Active Employee BY REGION



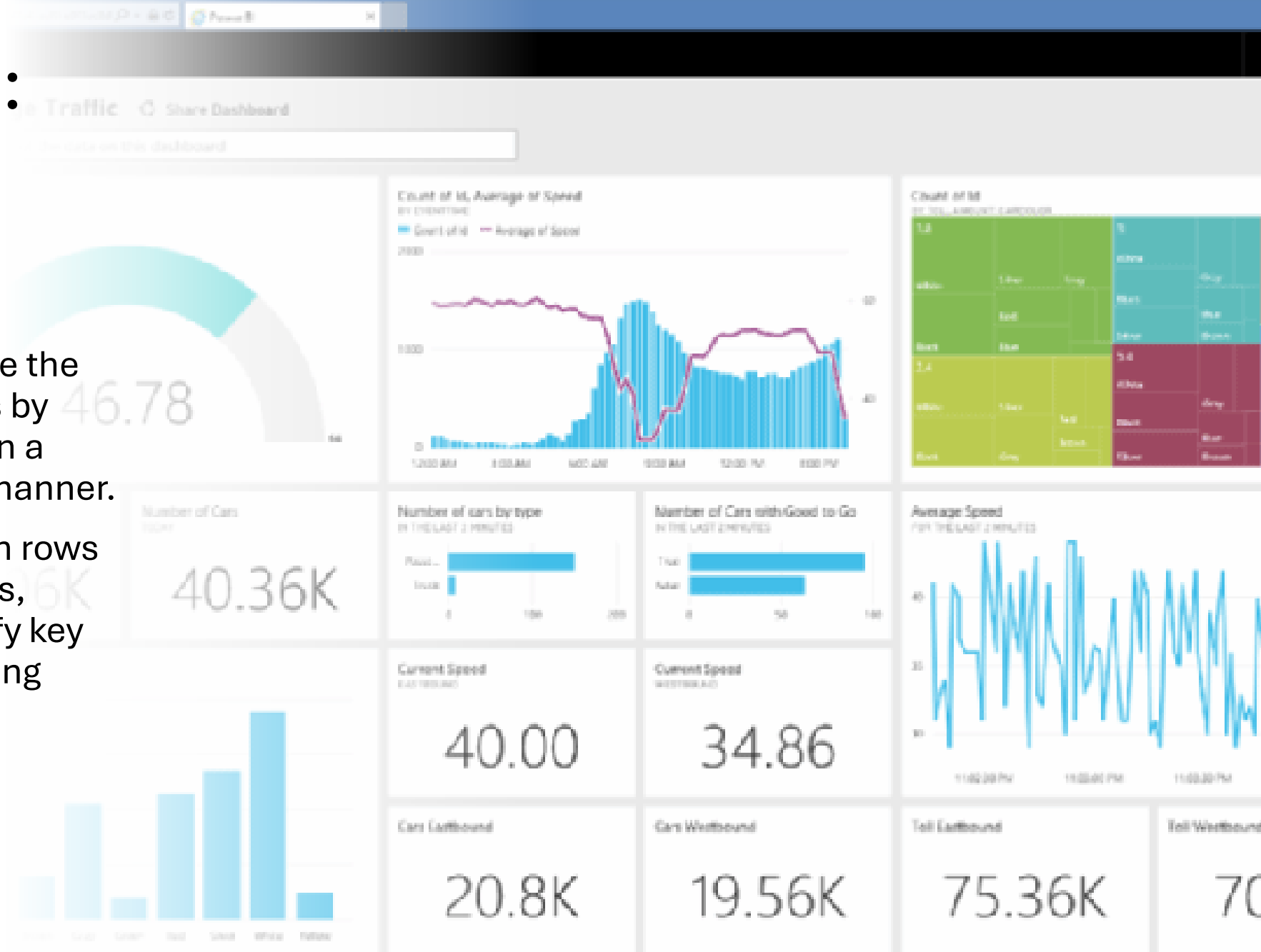
Data Vis for BI: Spotting Trends & Patterns

- Visualizations enable users to identify trends, patterns, and anomalies in the data that may not be immediately apparent in raw numbers or text.
- By visualizing data over time or across different dimensions, users can spot correlations, outliers, and emerging insights, allowing them to make timely adjustments or capitalize on opportunities.



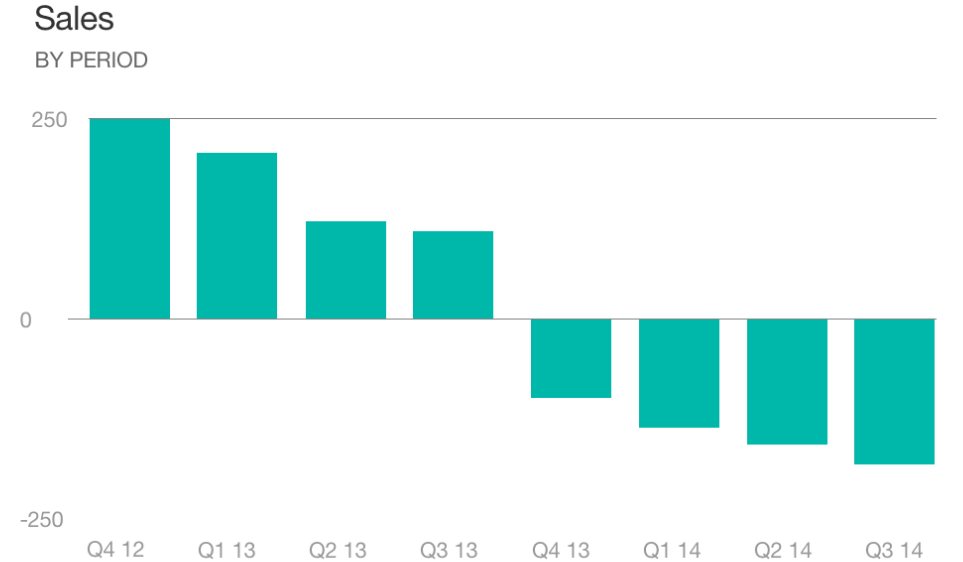
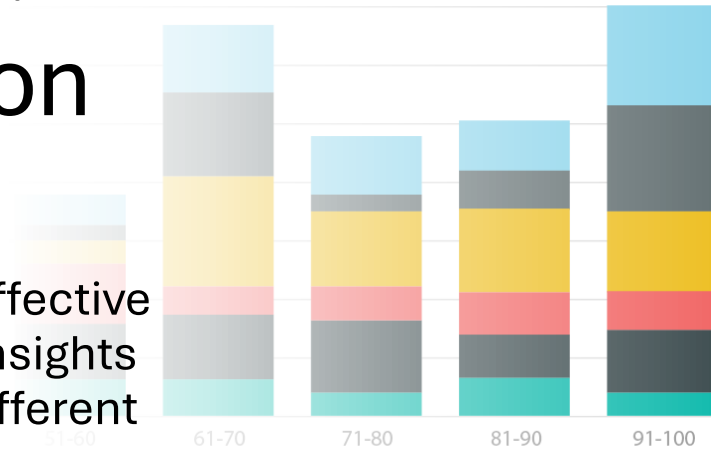
Data Vis for BI: Efficiency and Productivity

- Visualizations streamline the process of data analysis by presenting information in a concise and organized manner.
- Instead of sifting through rows of data or lengthy reports, users can quickly identify key insights and trends, saving time and increasing productivity.



Data Vis for BI: Communication

- Visualizations facilitate effective communication of data insights to stakeholders across different levels of an organization.
- Whether it's presenting findings in a meeting, sharing reports with colleagues, or communicating with clients, visualizations enhance the clarity and impact of the message, making it easier for others to comprehend and engage with the information.

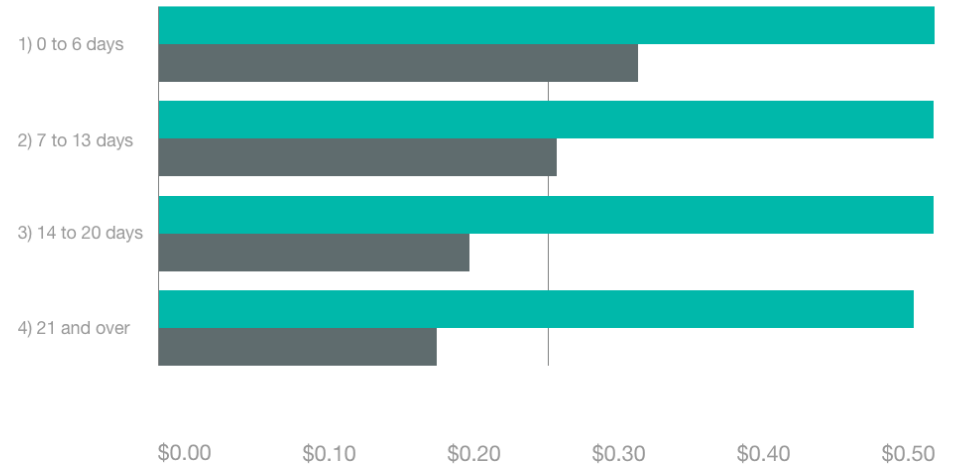


Variance to Budget

\$1.39M

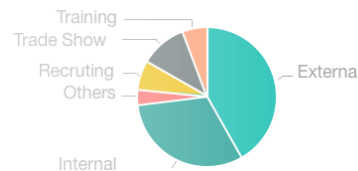
Sales

BY PERIOD



Number of Tips

BY TRIP PURPOSE



Per Mile

BY TRIP CLASS

Budget Remaining

BY TRAVEL MONTH

Data Vis for BI: Decision-Making

- Well-designed visualizations empower decision-makers to make informed decisions based on data.
- By presenting data in a visually compelling manner, decision-makers can evaluate options, identify opportunities, and mitigate risks more effectively, leading to better outcomes for the organization.

Reports > Segment Overview

Segment Overview

555.98K

Consumer Sales

1.03M

Corporate Sales

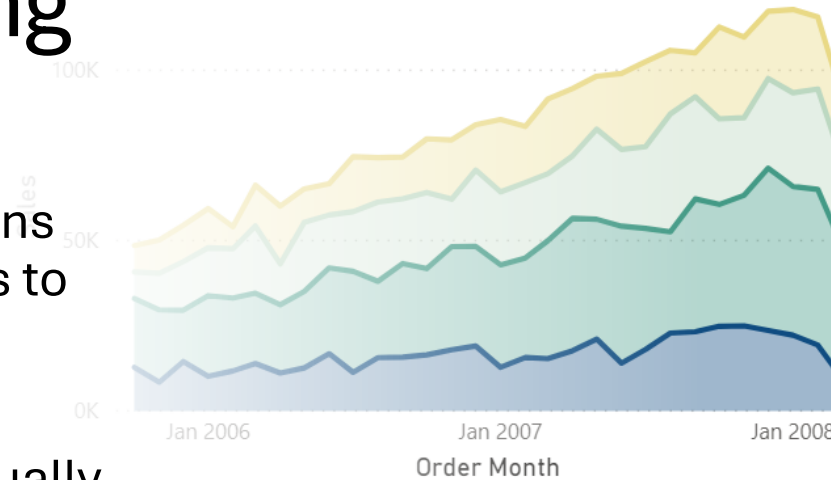
696.07K

Home Office Sales

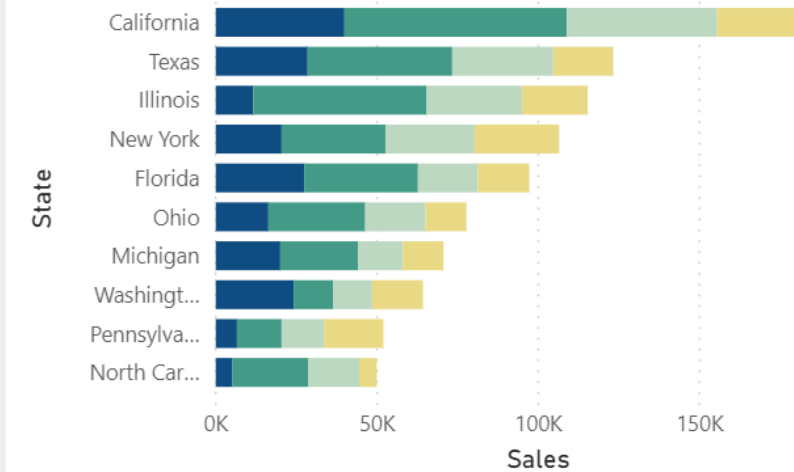
560.6

Small Business

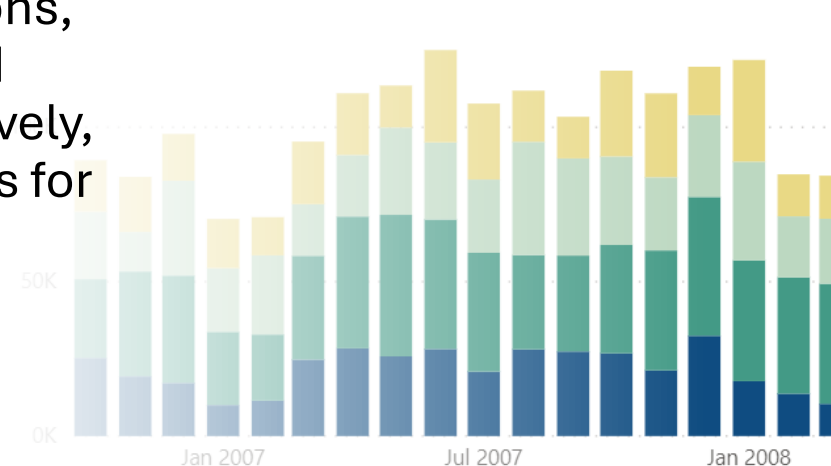
Sales by Order Month and Segment



Sales by State and Segment



Operating Cost by Order Month and Segment

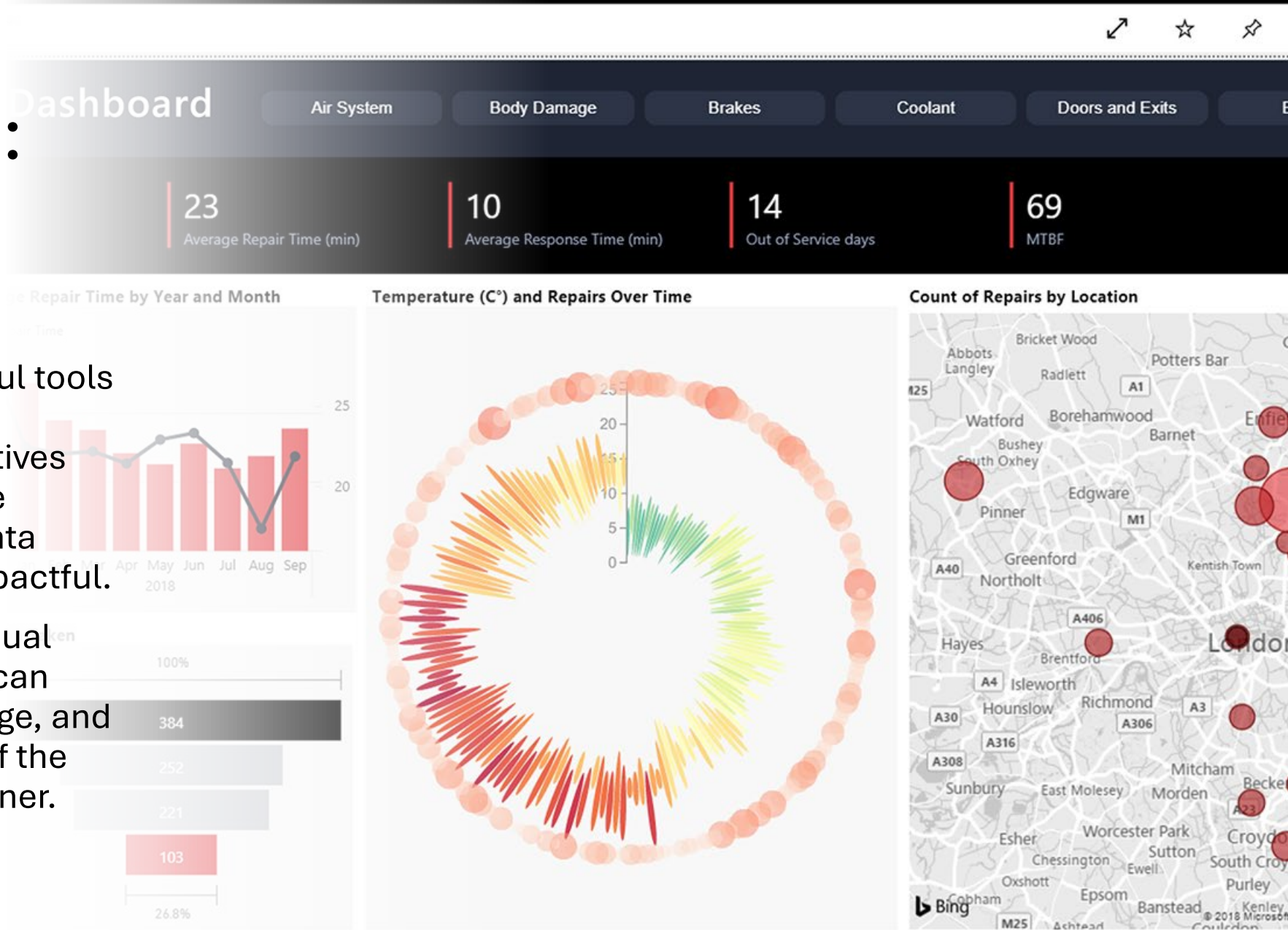


Largest Sales

Order ID	Order Date	Customer Name	Operating Cost	Sales
90831	12/28/2007	Sheryl Alexander	2,789.06	2,400.00
2209	9/25/2007	Ronnie Dodson	130.81	2,200.00
90916	2/26/2008	Dennis Boykin Townsend	1,970.46	1,800.00
91047	11/19/2006	Nina Bowles	-1,259.35	1,800.00
90778	5/31/2007	Carlos Johnson	7,865.40	1,700.00
90864	6/16/2007	John Merritt	-1,141.23	1,700.00
45571	12/18/2007	Ruth McConnell Young	351.49	1,700.00
91121	3/12/2008	Neil Hahn	-1,604.93	1,700.00
86355	2/15/2008	Keith Fowler	405.54	1,600.00
88013	1/28/2008	Don Beard	163.87	1,600.00

Data Vis for BI: Storytelling

- Visualizations are powerful tools for storytelling. They help transform data into narratives that engage and captivate audiences, making the data more memorable and impactful.
- By crafting compelling visual stories, data storytellers can inspire action, drive change, and convey the significance of the data in a compelling manner.



Data Visualization in Academic Research

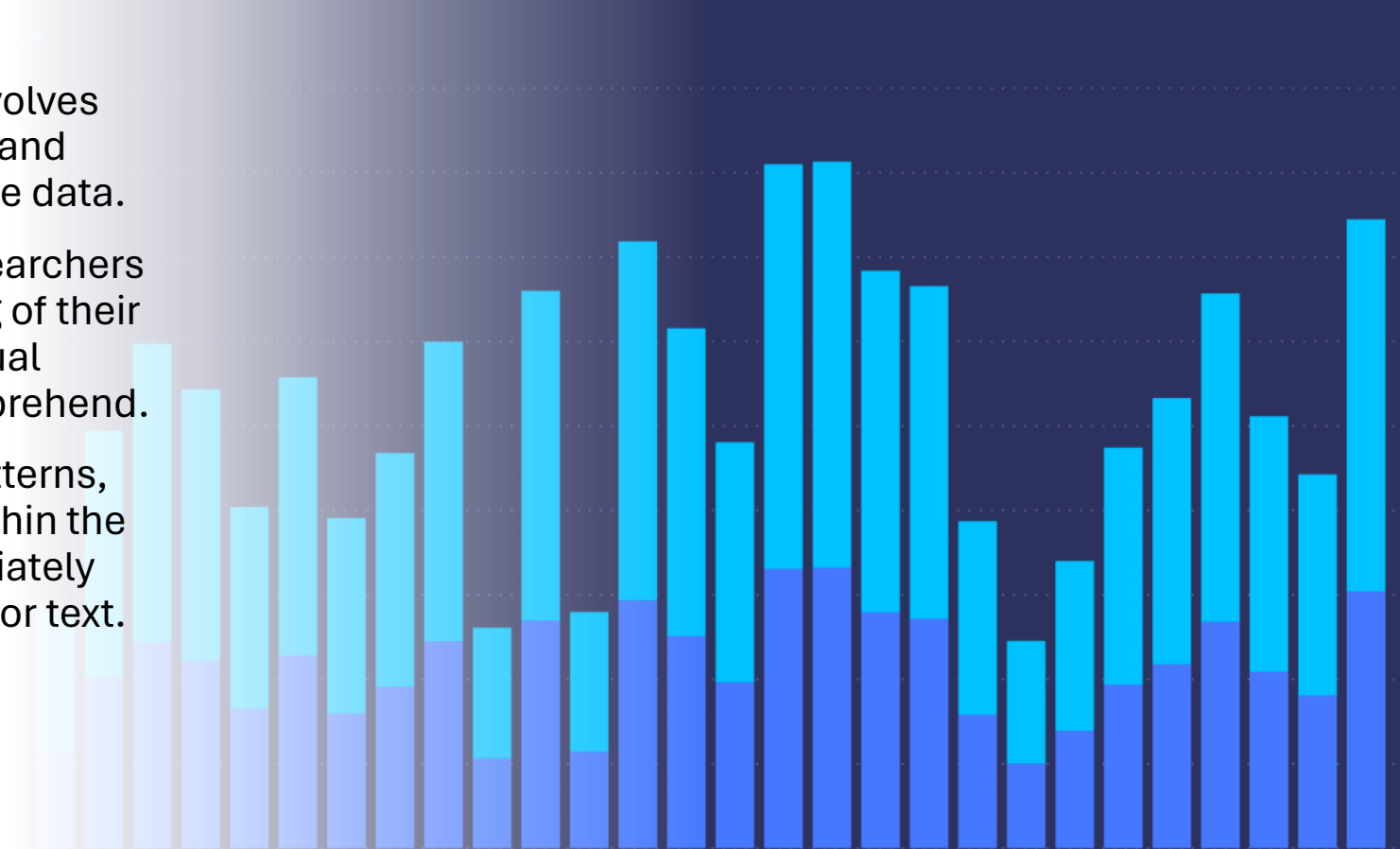
- **Why is data visualization important in academic research?**
 - Data visualization serves as a powerful tool for academic researchers to **explore, analyze, and communicate** their **findings effectively**, ultimately advancing knowledge and driving innovation in their respective fields of study.



Data Vis for Research: Enhanced Understanding

- Academic research often involves analyzing complex datasets and drawing conclusions from the data.
- Data visualization helps researchers gain a deeper understanding of their data by presenting it in a visual format that is easier to comprehend.
- Visualizations can reveal patterns, trends, and relationships within the data that may not be immediately apparent from raw numbers or text.

Net by Store



\$3,388,065



\$3,388,065

Total Sales



\$3,388,065

Total Sales

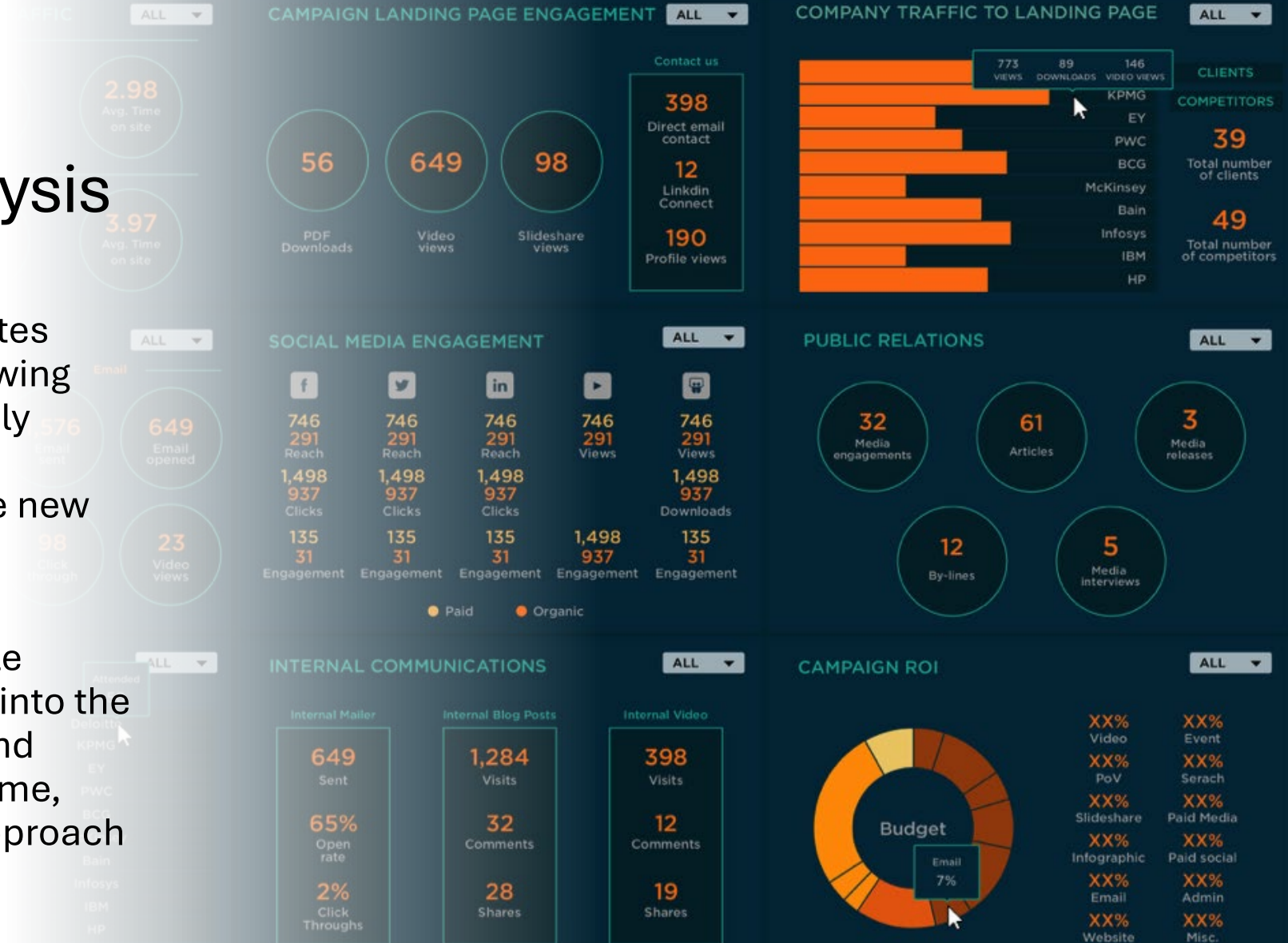


\$3,388,

Total Sales

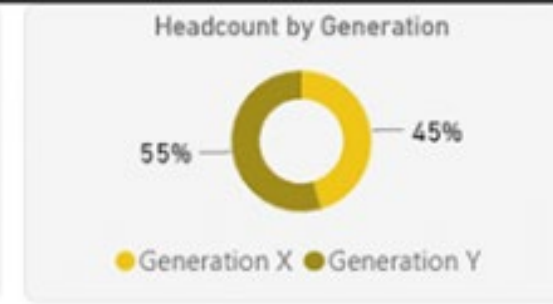
Data Vis for Research: Exploratory Analysis

- Data visualization facilitates exploratory analysis, allowing researchers to interactively explore their data, test hypotheses, and generate new research questions.
- Visualization tools with interactive features enable researchers to drill down into the data, filter information, and uncover insights in real-time, fostering a data-driven approach to research.

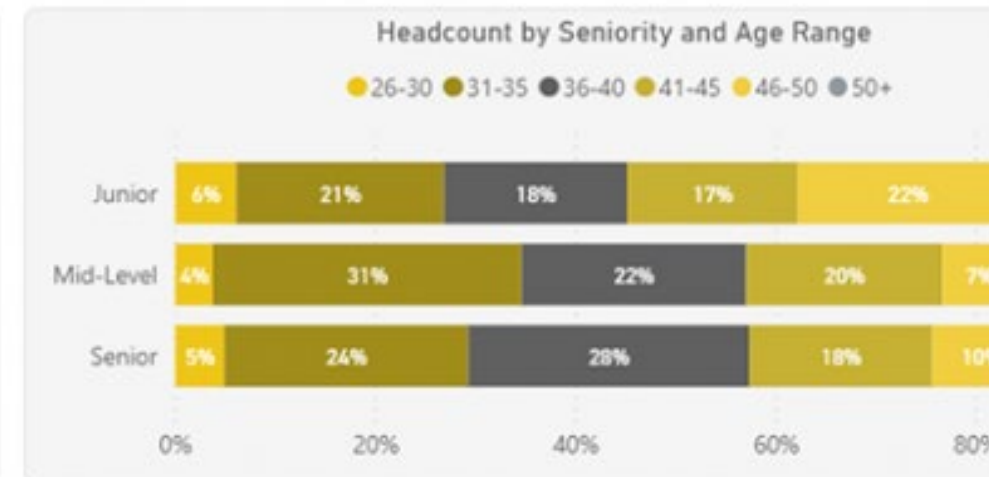
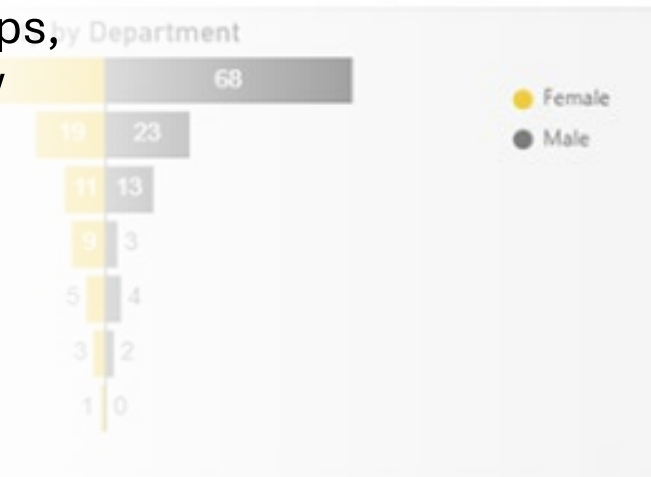
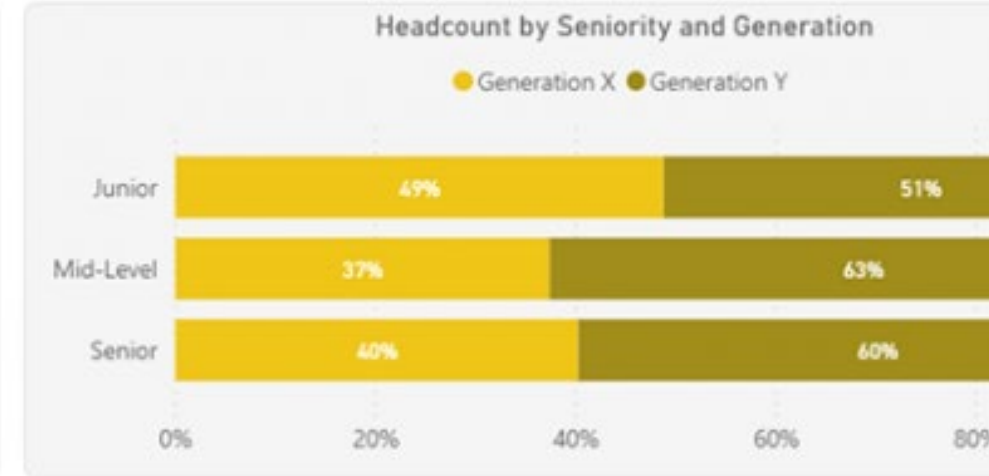
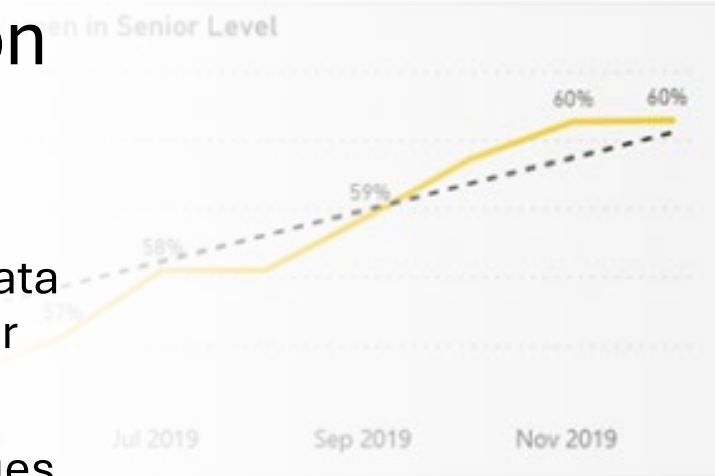


Data Vis for Research: Multi-Dimensional Data Representation

- Many academic research studies involve analyzing data with multiple dimensions or variables.
- Data visualization techniques such as scatter plots, heatmaps, and parallel coordinates allow researchers to visualize multi-dimensional data in a meaningful and interpretable way, enabling them to explore complex relationships and interactions within the data.



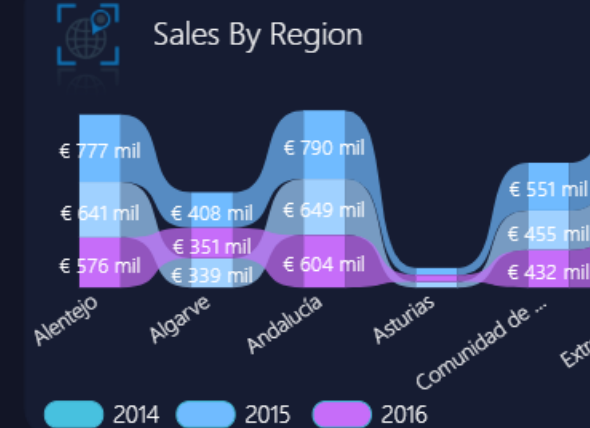
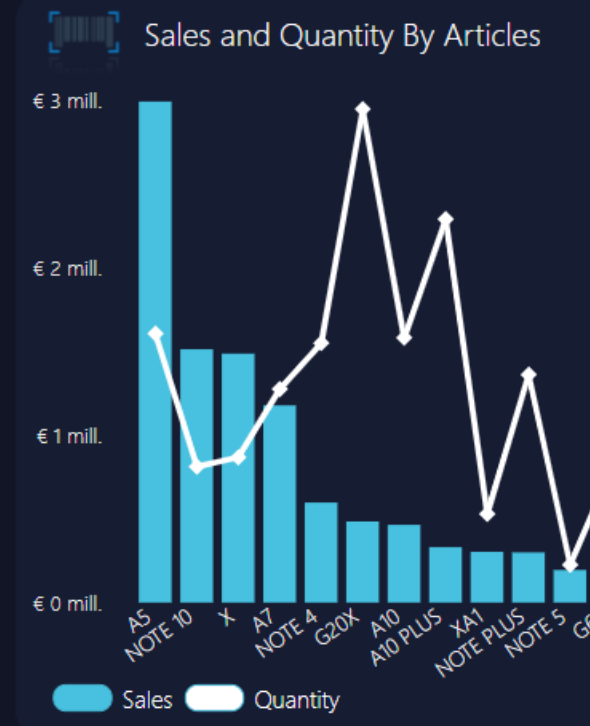
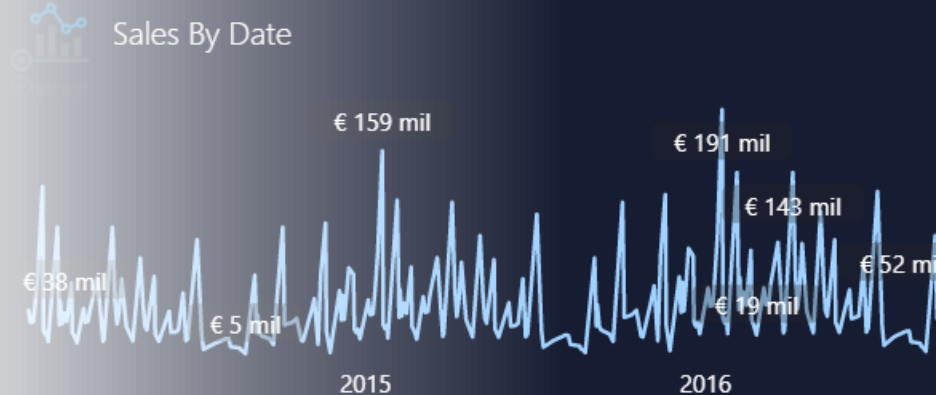
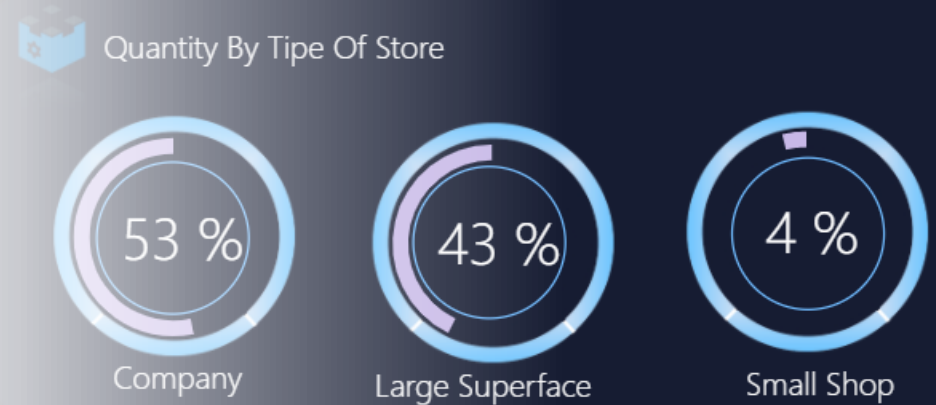
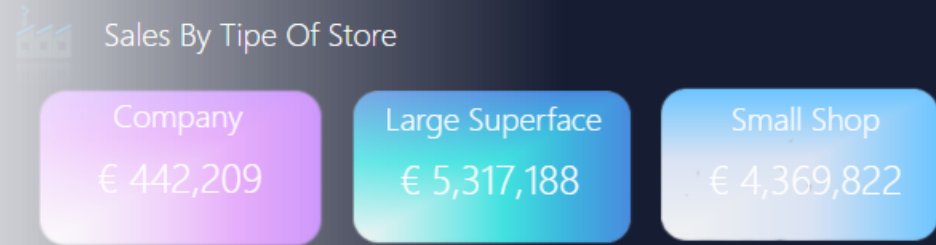
2017 2018



Data Vis for Research: Testing & Validation

- Visualizations play a crucial role in hypothesis testing and validation by providing empirical evidence to support or refute research hypotheses.
- Visual representations of data allow researchers to evaluate the strength of relationships, assess statistical significance, and validate research findings through visual inspection and analysis.

Dashboard | Sales



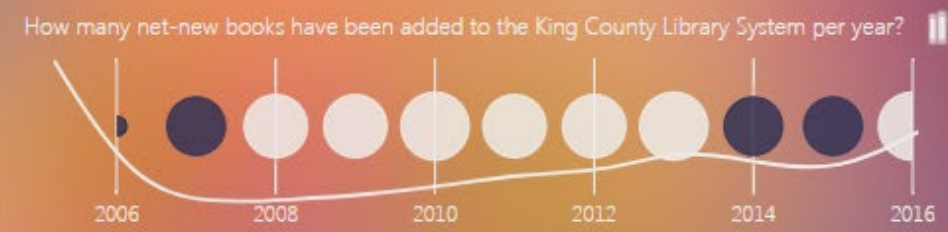
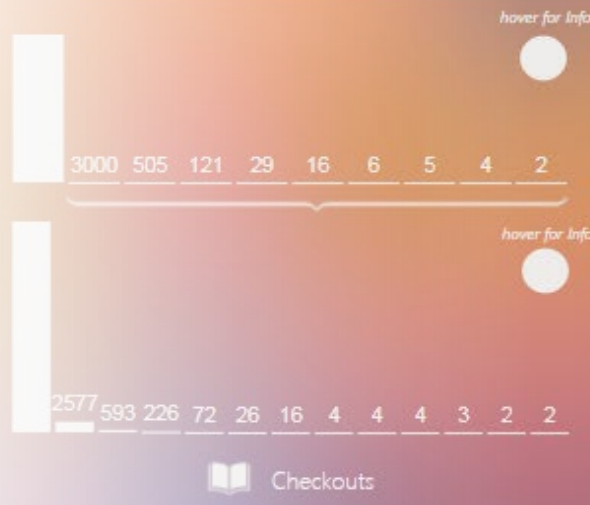


PARTNERSHIP IN SEATTLE

Data Vis for Research: Comparative Analysis

- Visualizations enable researchers to compare different datasets, experimental conditions, or research methodologies more effectively.
- By visualizing data side by side, researchers can identify similarities, differences, and patterns across multiple variables, leading to more robust and comprehensive analyses.

What kind of genres are being checked out in the King County Library System?

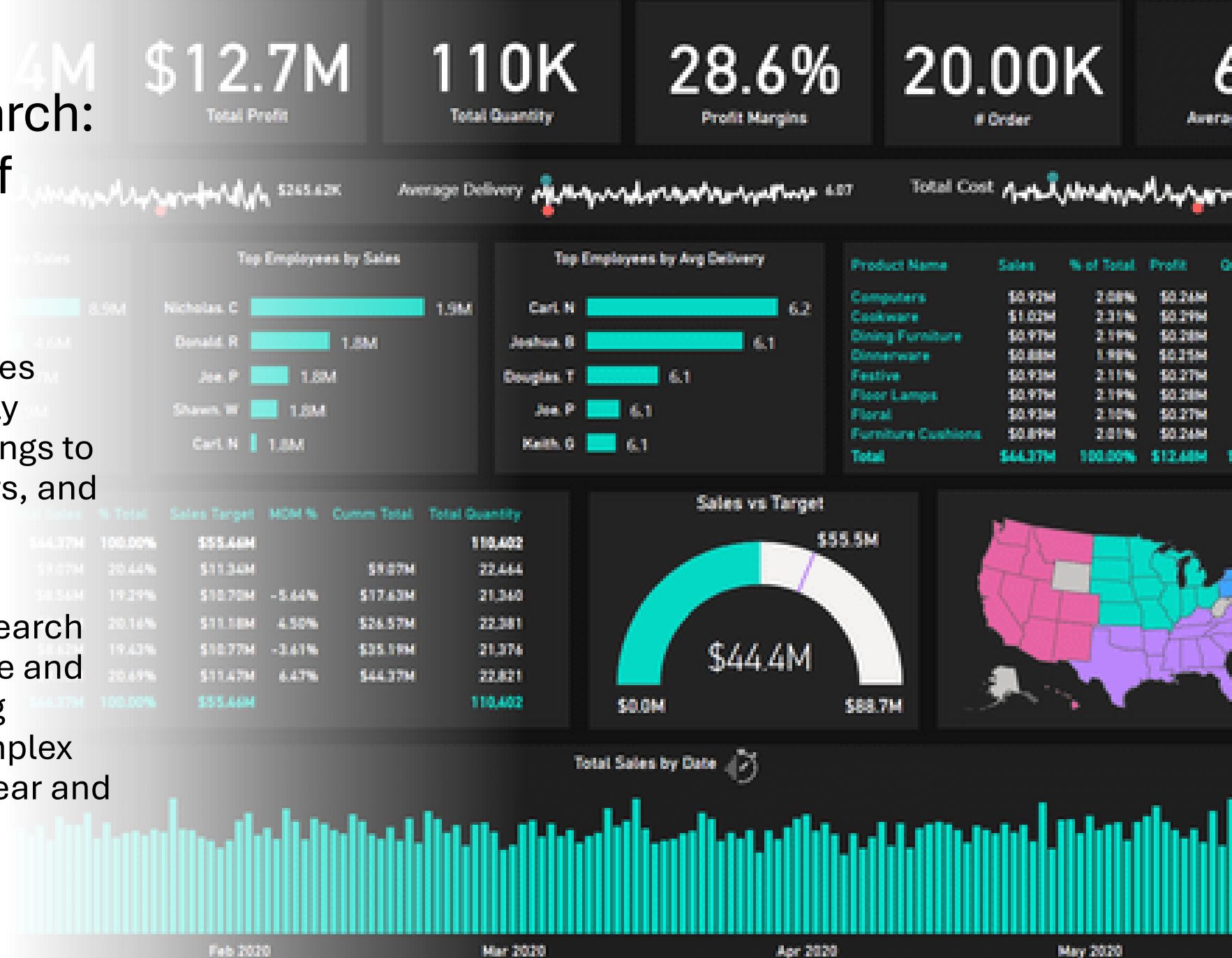


What are the most checked out titles in the King County Library System? ★

Creator	Title
Collins, Suzanne	The hunger games / Suzanne Collins.
Anthony Doerr	All the Light We Cannot See: A Novel
Alexie, Sherman, 1966-	The absolutely true diary of a part-time Indian / by Sherman...
Barton, Byron	The three bears / Byron Barton.
Collins, Suzanne	Mockingjay / Suzanne Collins.

Data Vis for Research: Communication of Findings

- Data visualization enables researchers to effectively communicate their findings to their peers, collaborators, and the broader academic community.
- Visualizations make research findings more accessible and understandable, helping researchers convey complex ideas and results in a clear and concise manner.



Data Vis for Research: Publication & Presentation

- Visualizations are often used in academic publications, presentations, and posters to illustrate key findings and support research conclusions.
- Well-designed visualizations enhance the visual appeal of academic materials, making them more engaging and impactful for readers and audiences.

Data Exchange Trend

850,00

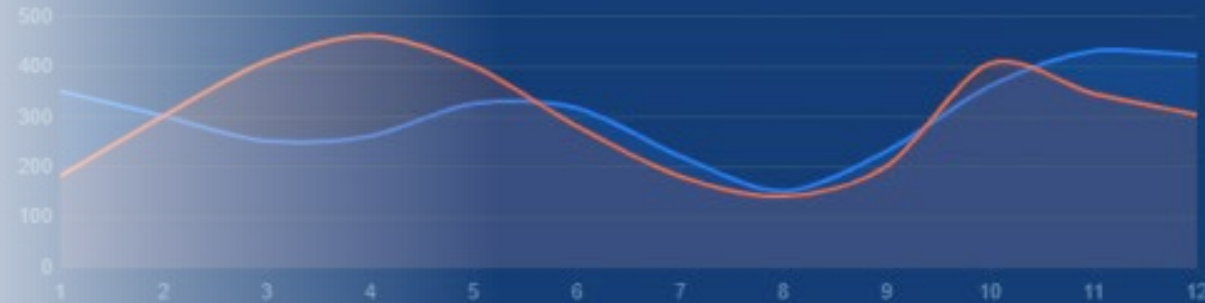
20% ↑

970,30

20% ↓

● Input

● Output



No.1

850,00

February

No.2

750,00

October

No.3

650,00

November

No.4

550,00

August

No.5

450,00

March

75%

Succeed

Department of Build app Information Exchange Succeed

Department of Build app Information Exchange Succeed

Department of Build app Information Exchange Succeed

63%

Fail

Department of Build app Information Exchange Succeed

Department of Build app Information Exchange Succeed

Department of Build app Information Exchange Succeed

45%

Exchanging

Department of Build app Information Exchange Succeed

Department of Build app Information Exchange Succeed

Department of Build app Information Exchange Succeed

Last Release

Department of Build
Supervisor Eng
Entrance for Certif

Catalog Status



Interfaces Rank

Resident Information

Personnel Information

Social Security Information

School Information

Bus Information

Intro to Power BI

- **What is Power BI?**
 - Power BI is a powerful business analytics tool developed by Microsoft.
 - It enables users to visualize and analyze data from various sources to gain insights and make data-driven decisions.



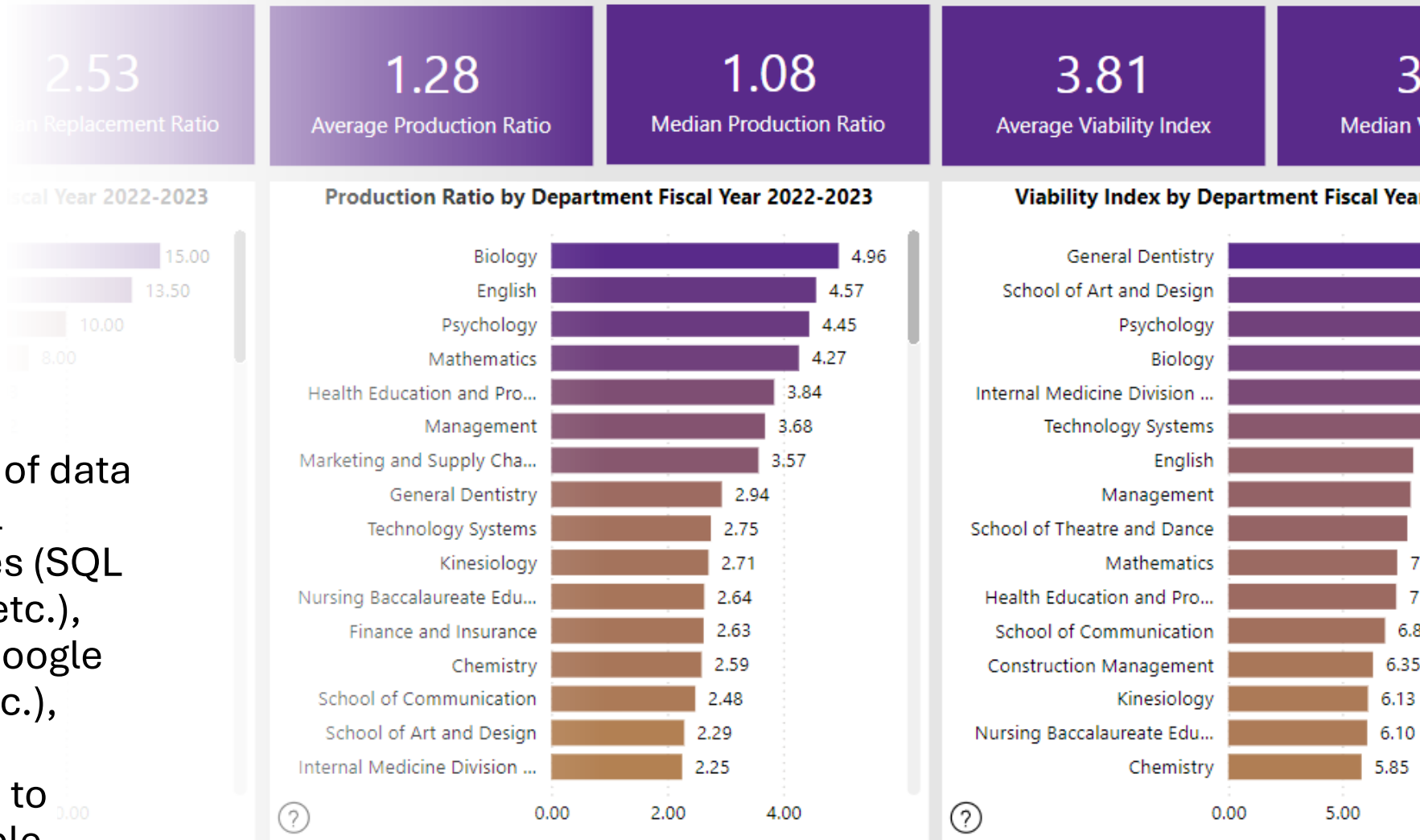
Intro to Power BI, cont.

- **What are the key features of Power BI?**
 - Data Connectivity
 - Data Modeling and Transformation
 - Visualization
 - Advanced Analytics
 - Sharing and Collaboration
 - Integration with Microsoft Ecosystem



PBI Features: Data Connectivity

- Power BI allows users to connect to a wide range of data sources, including Excel spreadsheets, databases (SQL Server, Oracle, MySQL, etc.), cloud services (Azure, Google Analytics, Salesforce, etc.), and many others. This versatility enables users to bring in data from multiple sources for comprehensive analysis.



	Declared Majors and Minors	Credentials Awarded	Replacement Ratio	Departmental SCH	Institutional SCH	Production Ratio	Viability Index	Instructional Expenditures
	205	49	4.18	20,908	711,270	2.94	12.30	\$4,351,801
	583	120	4.86	16,296	711,270	2.29	11.13	\$5,124,611
	1,427	602	2.37	31,635	711,270	4.45	10.54	\$4,118,010
	1,208	572	2.11	35,247	711,270	4.96	10.47	\$6,138,825
	337	77	4.38	16,035	711,270	2.25	9.87	\$508,207
	1,322	415	3.19	19,571	711,270	2.75	8.77	\$5,009,665

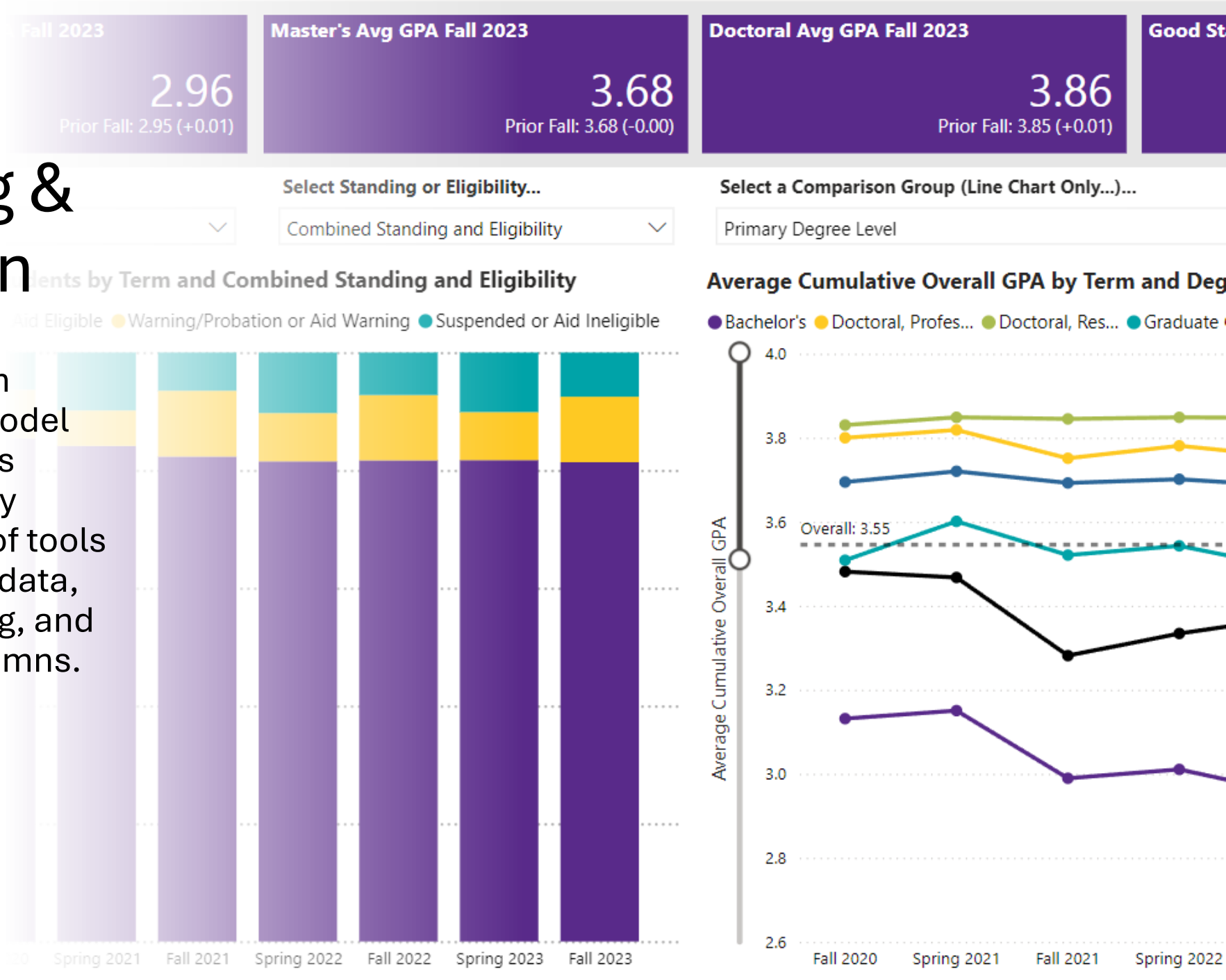
Power BI Data Source Connectors (sample)

- Excel
- CSV
- Text
- SQL Server Database
- Other Relational Databases
- Azure Data Services
- Online Services
- Web and API Services

- PDF
- Hadoop File (HDFS)
- JSON (JavaScript Object Notation)
- XML (eXtensible Markup Language)
- SharePoint Lists
- File Folder
- R Scrip
- Python Script

PBI Features: Data Modeling & Transformation

- With Power BI, users can clean, transform, and model data to suit their analysis needs. The built-in Query Editor provides a range of tools for shaping and refining data, such as filtering, merging, and creating calculated columns.

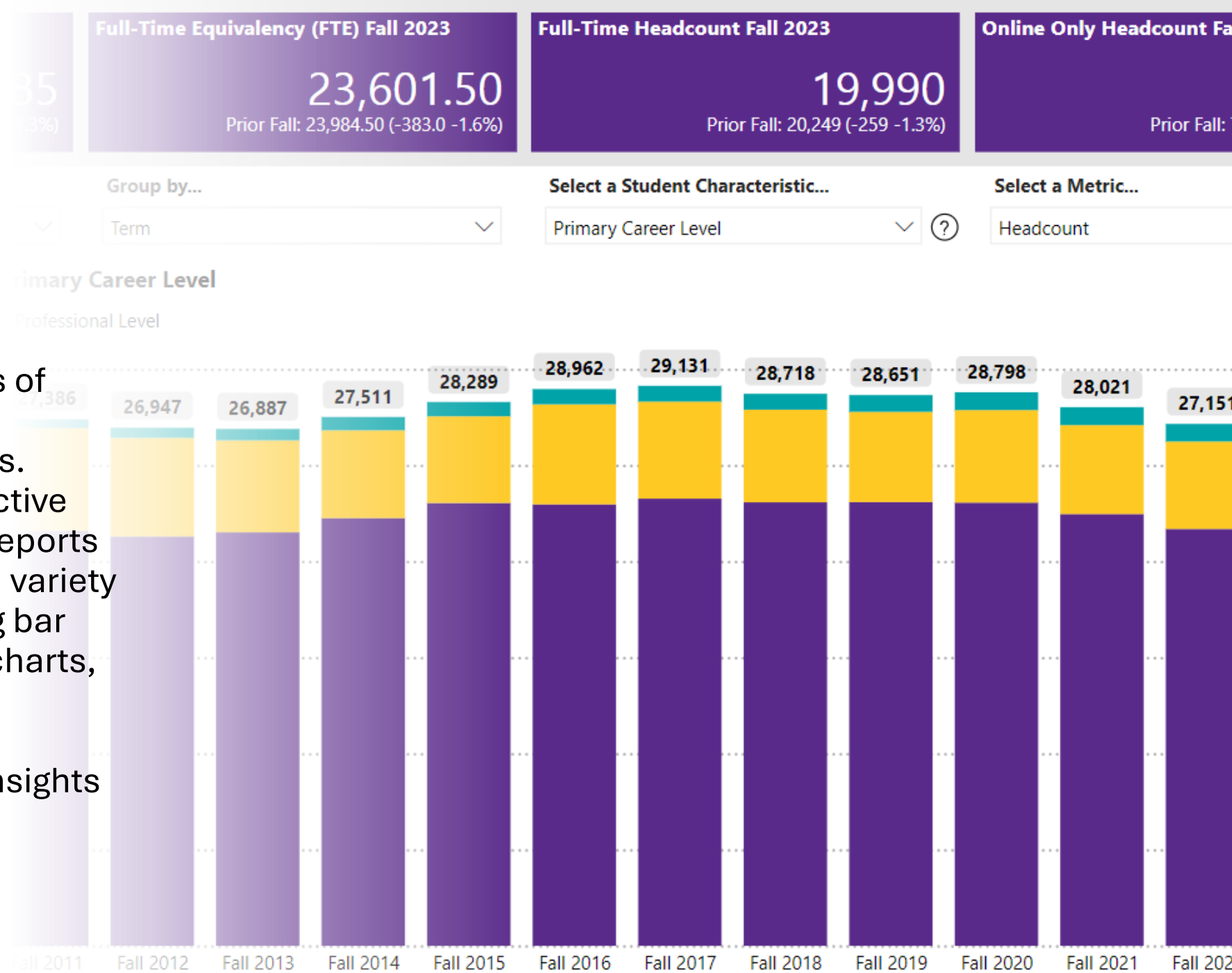


Power BI Data Trans- formations (sample)

- Filtering
 - Sorting
 - Add Columns
 - Remove Columns
 - Split Columns
 - Merge Columns
 - Data Type Conversion
 - Grouping
 - Aggregation
-
- Pivot Data
 - Unpivot Data
 - Conditional Columns
 - Custom Functions
 - M Language

PBI Features: Visualization

- One of the key strengths of Power BI is its robust visualization capabilities. Users can create interactive and visually appealing reports and dashboards using a variety of chart types, including bar charts, line charts, pie charts, maps, and more. These visualizations can be customized to convey insights effectively.

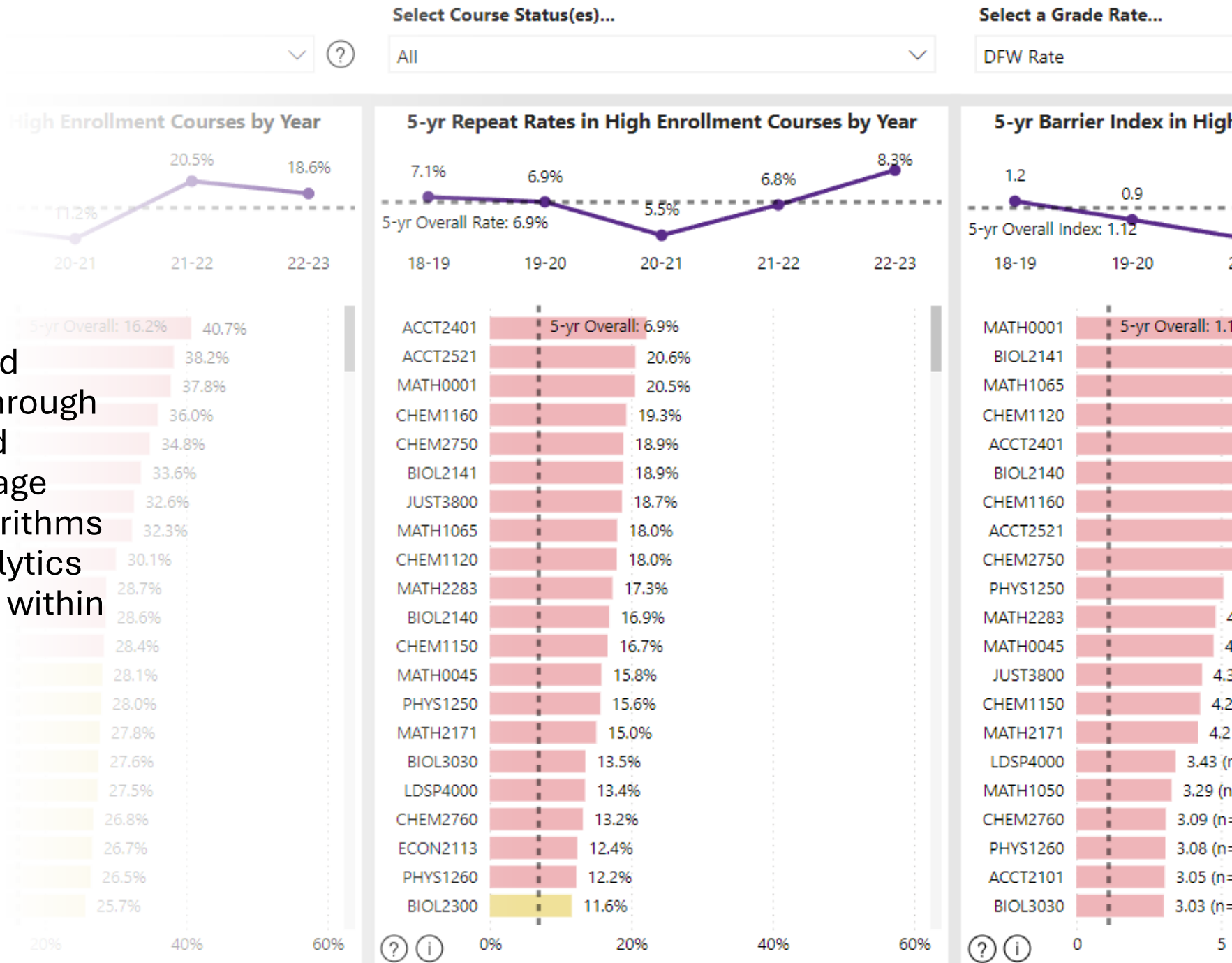


Power BI Visuals (sample)

- Bar Chart
 - Column Chart
 - Line Chart
 - Area Chart
 - Pie Chart
 - Donut Chart
 - Scatter Chart
 - Bubble Chart
 - Map
-
- Gauge
 - KPI (Key Performance Indicator)
 - Tree Map
 - Waterfall Chart
 - Funnel Chart
 - Ribbon Chart
 - Third-Party Visuals

PBI Features: Advanced Analytics

- Power BI offers advanced analytical capabilities through its integration with R and Python. Users can leverage custom scripts and algorithms to perform complex analytics and statistical modeling within their reports.

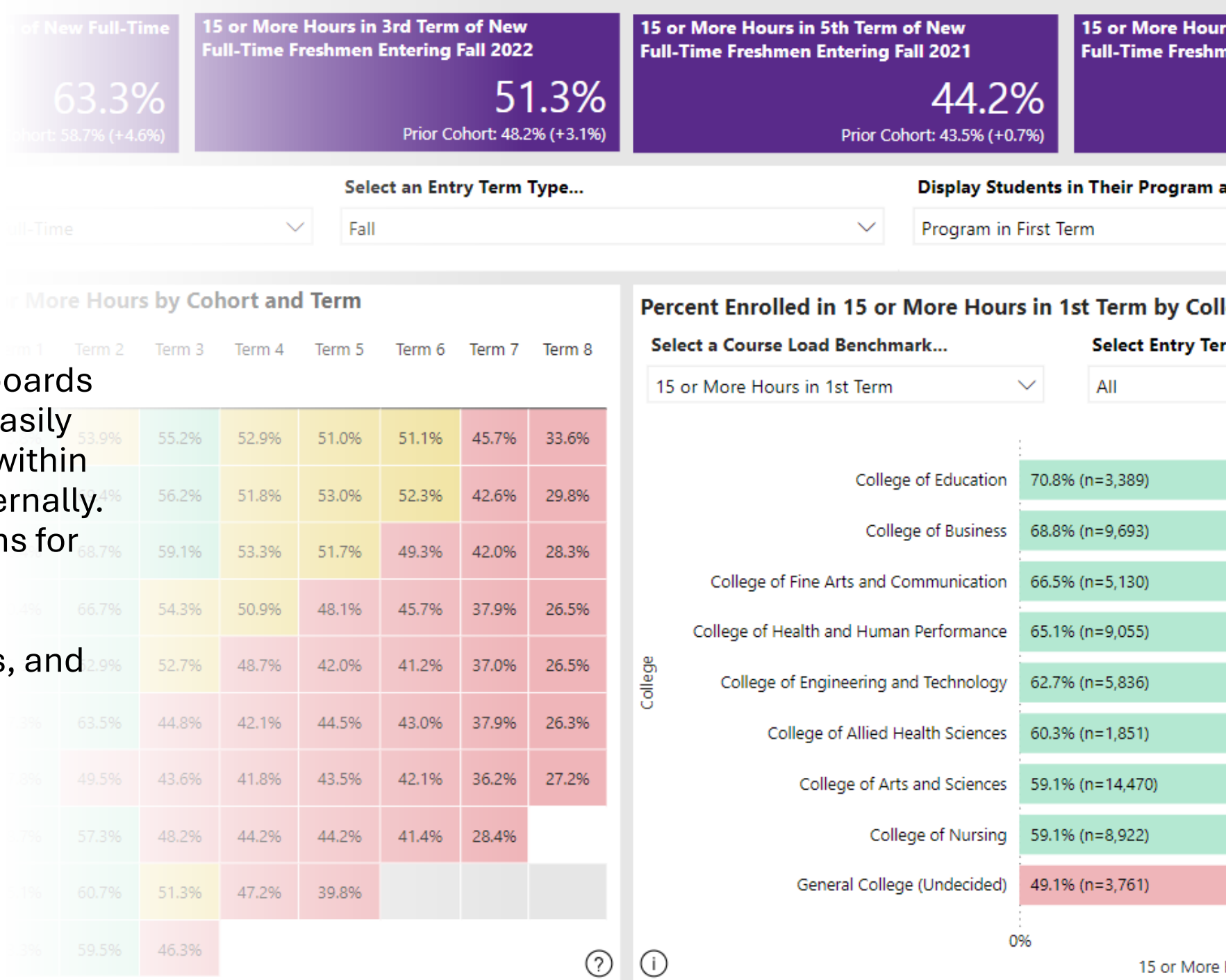


Power BI Advanced Analytics (sample)

- R Integration
- Python Integration
- Quick Measures
- Key Influencers Visual
- Anomaly Detection
- AI Insights (Premium)

PBI Features: Sharing and Collaboration

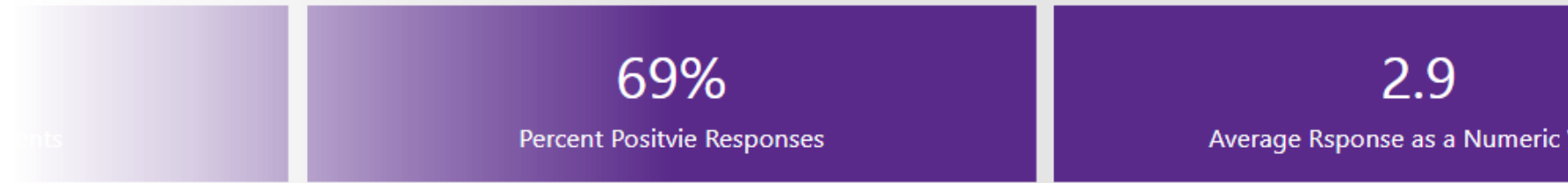
- Once reports and dashboards are created, users can easily share them with others within their organization or externally. Power BI provides options for sharing via the Power BI Service, embedding in websites or applications, and exporting to formats like PowerPoint or PDF.



Power BI Sharing Features

- Publish to PowerBI Service
- Share Reports and Dashboards
- Collaborate with Colleagues
- Commenting and Discussion
- Subscribe to Reports
- Embed Reports
- Microsoft Teams Integration

PBI Features: Integration with Microsoft Ecosystem

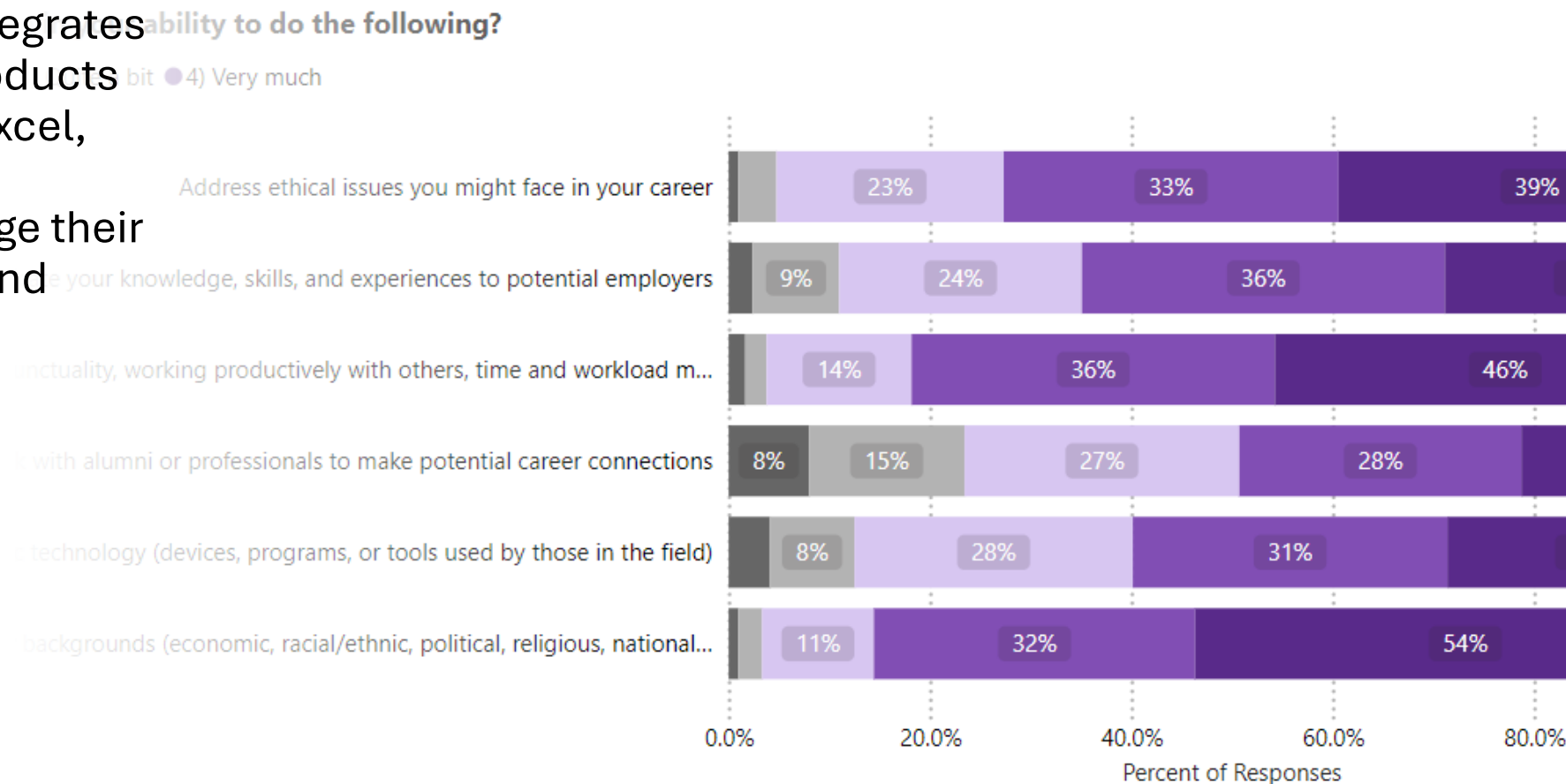


Select a Class Level...
Freshman

Group Responses by...
Response

How much confidence do you have in your ability to do the following?

- Power BI seamlessly integrates with other Microsoft products and services, such as Excel, SharePoint, and Teams, allowing users to leverage their existing infrastructure and workflows.



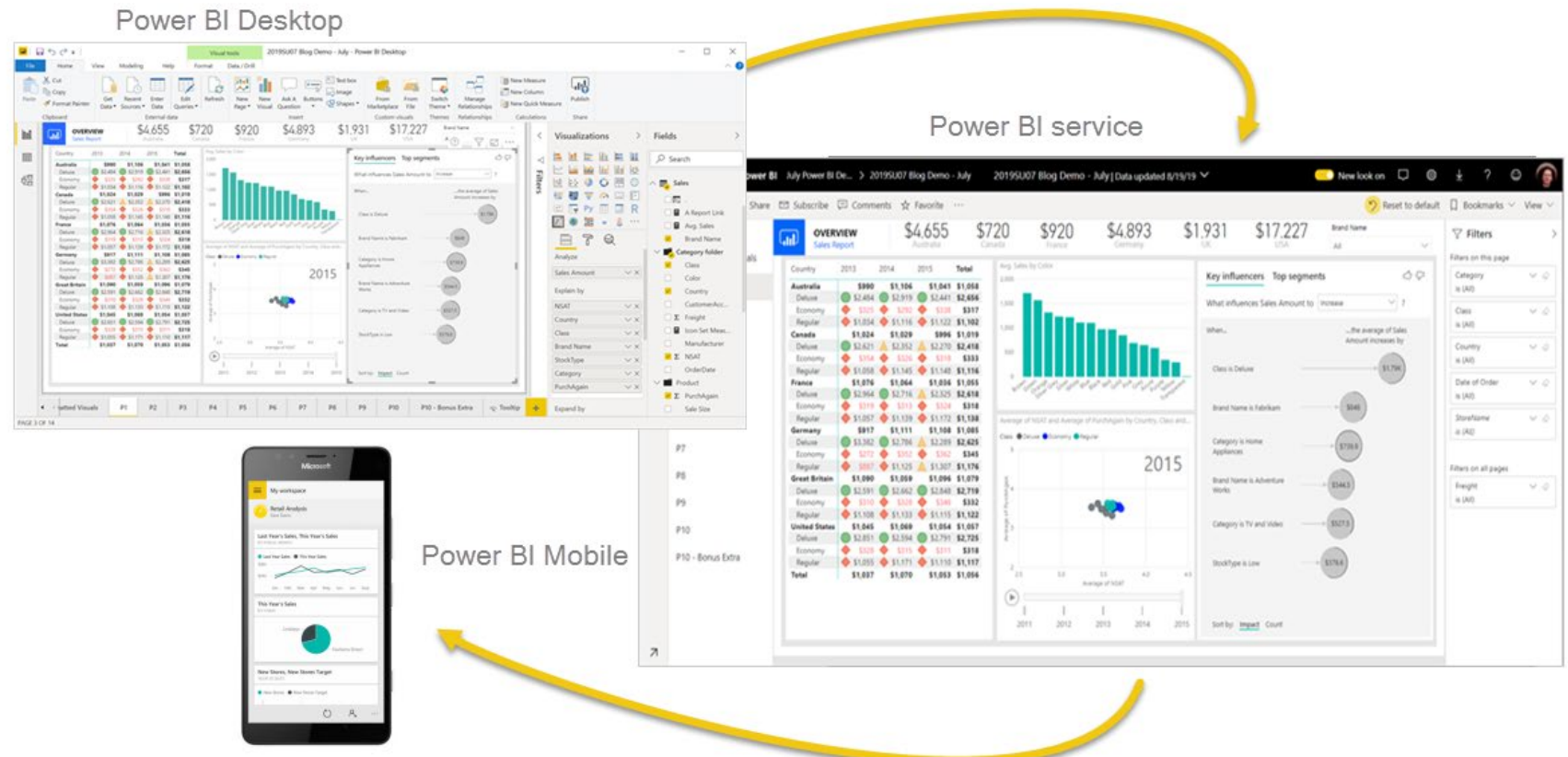
Power BI Sharing Features

- Excel
 - Office 365
 - Teams
 - Azure
 - Dynamics 365
 - Power Platform
-

Intro to Power BI, cont.

- **What are the components of Power BI?**

- Desktop
- Service
- Mobile
- *Report Builder*
- *Report Server*



Clipboard: Paste, Cut, Copy, Format painter

Data: Get data, Excel workbook, Data hub, SQL Server, Enter data, Dataverse, Recent sources

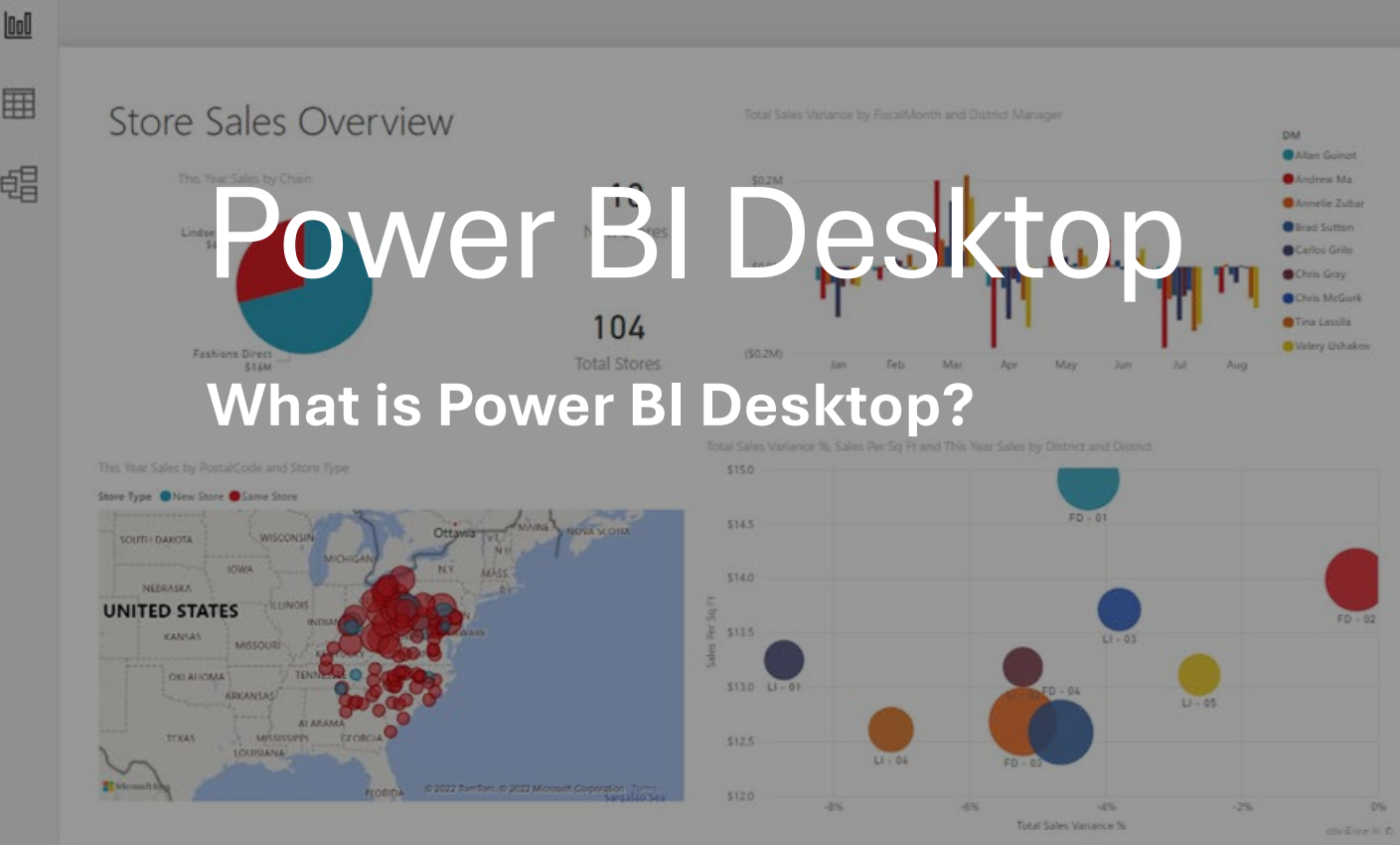
Queries: Transform data, Refresh data

Insert: New visual, Text box, More visuals

Calculations: New measure, Quick measure

Sensitivity: Sensitivity

Share: Publish



Filters

Search

Filters on this page

- Chain is (All)
- City is (All)
- District is (All)
- Name is (All)
- Open Month is (All)
- Store Type is (All)

Add data fields here

Visualizations

Build visual

Values

Add data fields here

Drill through

Cross-report Off

Keep all filters On

Add drill-through fields here

Fields

Search

- Sales
- District
- Item
- Store
- Time

Power BI Desktop

What is Power BI Desktop?

Power BI Desktop, cont.

- **Where can I download PBI Desktop software?**
 - You can get the most recent version of Power BI Desktop from the [Windows Store](#), or as a single executable containing all supported languages that you [download](#) and install on your computer.
- **When is PBI Desktop software updated?**
 - Power BI Desktop is updated and released **monthly**, incorporating customer feedback and new features. Only the most recent version of Power BI Desktop is supported by Microsoft.



Break then Demonstration

- Let's take a break for ~10 minutes.
- Then we'll get into the demo and build a dashboard!

About Today's Demonstration

- Credit: Keven Stratvert
- Kevin's YouTube Channel:
 - <https://www.youtube.com/@KevinStratvert>
- How to use Microsoft Power BI Video – Tutorial for Beginners:
 - https://www.youtube.com/watch?v=TmhQCQr_DCA&t=256s